
DESCRIPTION DES COMPOSANTS - COMPONENTS DESCRIPTION

| Index | Description - Description | Matière - Material |
|-------|----------------------------------|---|
| 1 | Corps couissant - Center Sleeves | Acier Inoxydable - Stainless Steel AISI 304 |
| 2 | Brides - Flanges | Acier - Carbon Steel S235 JR |
| 3 | Joint - Gasket | NBR |
| 4 | Boulons - Bolts | Acier - Carbon Steel 8.8 |

CARACTERISTIQUES

- Brides selon: DIN 2576 PN10/PN16 et DIN 2501 PN16.
- Protection extérieure 'EPOXY'.
- Perte de charge minimale.
- Installation horizontale ou verticale.
- Design unidirectionnel.
- Facilite le montage ou le démontage de vannes ou d'autres éléments de l'installation.
- Nous recommandons d'utiliser la boulonnerie pour au moins 50% des trous de la bride.

CONDITIONS DE TRAVAIL ADMISSIBLES

- Pression de travail: PN 10 / PN 16.
- Température maximale: 70 °C.
- Toutes les installations doivent respecter les valeurs de Pression – Température ou les autres paramètres pertinents de l'installation en fonction des exigences légales spécifiées et, en son absence, les exigences des connaissances techniques actuelle. Dans tous les cas, il faut vérifier avant la mise en service, la résistance du joint en NBR et de la vanne face à l'action de substances avec lesquelles ils entrent en contact, afin qu'ils ne puissent se détériorer dans les conditions d'utilisation.

APLICAÇÕES GERAIS

- Réseaux d'eau.
- Approvisionnement d'eau, pompage et distribution d'eau.
- Systèmes d'irrigation.
- Ouvrages hydrauliques et civils.
- Climatisation.

BASIC FEATURES

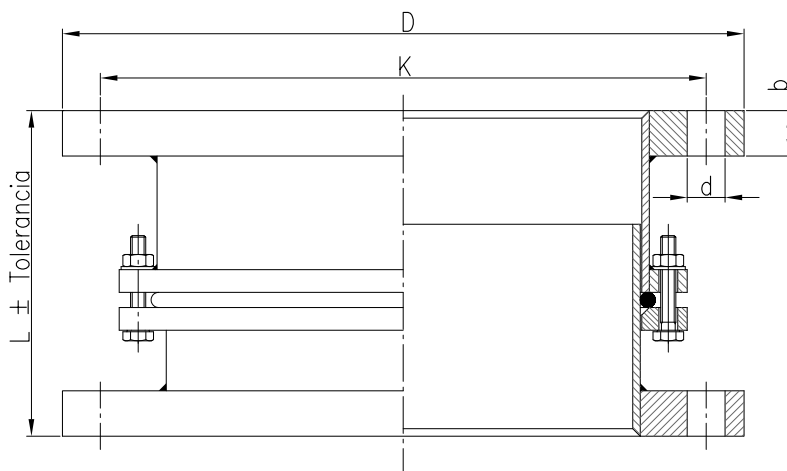
- Flange dimension: DIN 2576 PN10/PN16 and DIN 2501 PN16.
- Outside "EPOXY" coating.
- Minimum drop pressure.
- Horizontal or vertical working position.
- Unidirectional design.
- It facilitates the assembling and dismantling of valves and other elements of the installation.
- We recommend using threaded rods in 50% of the holes in the flanges.

PERMISSIBLE WORKING CONDITIONS

- Working pressure: PN 10 / PN 16.
- Maximum temperature: 70 °C.
- All installations must comply with the Pressure - Temperature or other relevant parameters of the installation according to the legal requirements specified and in their absence the requirements according to current knowledge of the technique. In any case, the resistance of the NBR and the valve to the action of the substances with which they come into contact so that they cannot deteriorate in the conditions of use must be verified before commissioning.

GENERAL APPLICATIONS

- Water systems.
- Water supply, pumping and connection plants.
- Irrigation systems.
- Hydraulic and civil works.
- HVAC systems.


INFORMATION TECHNIQUE - TECHNICAL INFORMATION

| DN | Ø | CODE | DIMENSIONS - DIMENSIONS (mm) | | | | | | | Poids approx. Weight approx. (Kg) |
|-----|--------|----------|------------------------------|-----------|--------------|-----|-----|----|---------|---|
| | | | L | TOLERANCE | BRIDE/FLANGE | | | | | |
| | | | | | PN | D | K | b | n-d | |
| 50 | 2" | VF700050 | 180 | ±30 | 10/16 | 165 | 125 | 18 | 4 x 18 | 6,7 |
| 65 | 2 1/2" | VF700065 | 180 | ±30 | 10/16 | 185 | 145 | 18 | 4 x 18 | 8,1 |
| 80 | 3" | VF700080 | 180 | ±30 | 10/16 | 200 | 160 | 20 | 8 x 18 | 9,6 |
| 100 | 4" | VF700100 | 180 | ±30 | 10/16 | 220 | 180 | 20 | 8 x 18 | 10,8 |
| 125 | 5" | VF700125 | 180 | ±30 | 10/16 | 250 | 210 | 22 | 8 x 18 | 15,0 |
| 150 | 6" | VF700150 | 180 | ±30 | 10/16 | 285 | 240 | 22 | 8 x 22 | 17,0 |
| 200 | 8" | VF700201 | 200 | ±40 | 10 | 340 | 295 | 24 | 8 x 22 | 26,0 |
| 200 | 8" | VF700200 | 200 | ±40 | 16 | 340 | 295 | 24 | 12 x 22 | 25,0 |
| 250 | 10" | VF700251 | 200 | ±40 | 10 | 395 | 350 | 26 | 12 x 22 | 32,0 |
| 250 | 10" | VF700250 | 200 | ±40 | 16 | 405 | 355 | 26 | 12 x 26 | 34,0 |
| 300 | 12" | VF700301 | 200 | ±40 | 10 | 445 | 400 | 26 | 12 x 22 | 39,0 |
| 300 | 12" | VF700300 | 200 | ±40 | 16 | 460 | 410 | 28 | 12 x 26 | 47,0 |
| 350 | 14" | VF700351 | 240 | ±40 | 10 | 505 | 460 | 28 | 16 x 22 | 53,0 |
| 350 | 14" | VF700350 | 240 | ±40 | 16 | 520 | 470 | 30 | 16 x 26 | 64,0 |
| 400 | 16" | VF700401 | 240 | ±40 | 10 | 565 | 515 | 32 | 16 x 26 | 77,0 |
| 400 | 16" | VF700400 | 240 | ±40 | 16 | 580 | 525 | 32 | 16 x 30 | 82,0 |
| 500 | 20" | VF700501 | 240 | ±40 | 10 | 670 | 620 | 38 | 20 x 26 | 128,0 |
| 500 | 20" | VF700500 | 240 | ±40 | 16 | 715 | 650 | 38 | 20 x 33 | 136,0 |
| 600 | 24" | VF700601 | 300 | ±50 | 10 | 780 | 725 | 36 | 20 x 30 | 157,0 |
| 600 | 24" | VF700600 | 300 | ±50 | 16 | 840 | 770 | 38 | 20 x 36 | 167,0 |

Note : En raison de l'évolution constante de nos produits, ces spécifications peuvent être modifiées sans préavis.

Note : Due to the continuous development of our products, specifications may be changed without notification at any time.

Rev.1-11.19
2/2