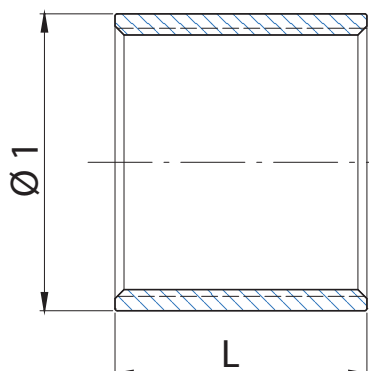


Fig. 270

**MANCHON  
SOCKET**

ISO 4144

**INFORMATION TECHNIQUE - TECHNICAL INFORMATION**

DN	CODE	DIMENSIONS - DIMENSIONS		Poids approx. Weight approx. (kg)
		Ø 1 (mm)	L (mm)	
1/8"	I2706000	14,0	17,0	0,010
1/4"	I2706001	18,0	25,0	0,025
3/8"	I2706002	21,3	26,0	0,030
1/2"	I2706003	26,0	34,0	0,060
3/4"	I2706004	31,5	35,5	0,070
1"	I2706005	39,0	42,0	0,125
1 1/4"	I2706006	48,0	47,0	0,190
1 1/2"	I2706007	54,0	47,0	0,220
2"	I2706008	66,0	56,0	0,280
2 1/2"	I2706009	81,0	64,0	0,410
3"	I270600A	94,0	70,0	0,515
4"	I270600C	120,0	82,0	0,845

**CARACTERISTIQUES DE BASE**

- Fabriqué en acier inoxydable 316 L issu d'un tube soudé.
- Dimensions selon norme ISO 4144.
- Filets selon norme NF EN 10226-1 / ISO 228-1 (type R-Rp).
- Température de travail: de -20 à 220 °C.
- Pression de travail: PN 20.

**DOMAINES D'APPLICATION**

- Fluides, air, vapeur, huiles et gaz.

**BASIC FEATURES**

- Made of AISI 316 L from welding pipe.
- Dimensions according to ISO 4144 standard.
- Threads according to EN 10226-1 / ISO 7-1 (type R-Rp).
- Working temperature range: -20 to 220 °C.
- Maximal working pressure: PN 20.

**GENERAL APPLICATIONS**

- Water, air, steam, oil and gas.

Note : En raison de l'évolution constante de nos produits, ces spécifications peuvent être modifiées sans préavis.

Note : Due to the continuous development of our products, specifications may be changed without notification at any time.

Rev.1-10.19



Polígono Industrial ATUSA - Agurain S/N - 01200 Salvatierra (Alava) España  
Tel.: (+34) 945 18 00 00 Fax : (+34) 945 30 01 53 e-mail: ventas@atusa.es  
[www.atusa.es](http://www.atusa.es)

