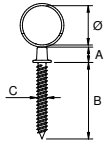



## FIXING SYSTEMS



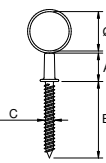
### STAINLESS STEEL AISI 304 SINGLE WOOD-SCREW




Ø mm	A mm	B mm	C mm		CODE
15	7	35	4,8	90	PF4S0015
18	7	35	4,8	60	PF4S0018
22	7	35	4,8	40	PF4S0022
28	7	35	4,8	20	PF4S0028



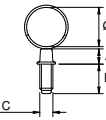
### STAINLESS STEEL AISI 304 PLUS WOOD-SCREW




Ø mm	A mm	B mm	C mm		CODE
15	13	35	4,8	75	PF4P0015
18	13	35	4,8	50	PF4P0018



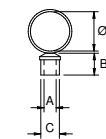
### STAINLESS STEEL AISI 304 METRIC MALE PIPE CLAMP




Ø mm	A mm	B mm	C mm		CODE
15	6	12	6	90	PF4M0015
18	6	12	6	60	PF4M0018
22	6	12	6	40	PF4M0022
28	6	12	6	20	PF4M0028



### STAINLESS STEEL AISI 304 METRIC FEMALE PIPE CLAMP



Ø mm	A mm	B mm	C mm		CODE
15	6	10	12	90	PF4F0015
18	6	10	12	60	PF4F0018
22	6	10	12	40	PF4F0022
28	6	10	12	20	PF4F0028